

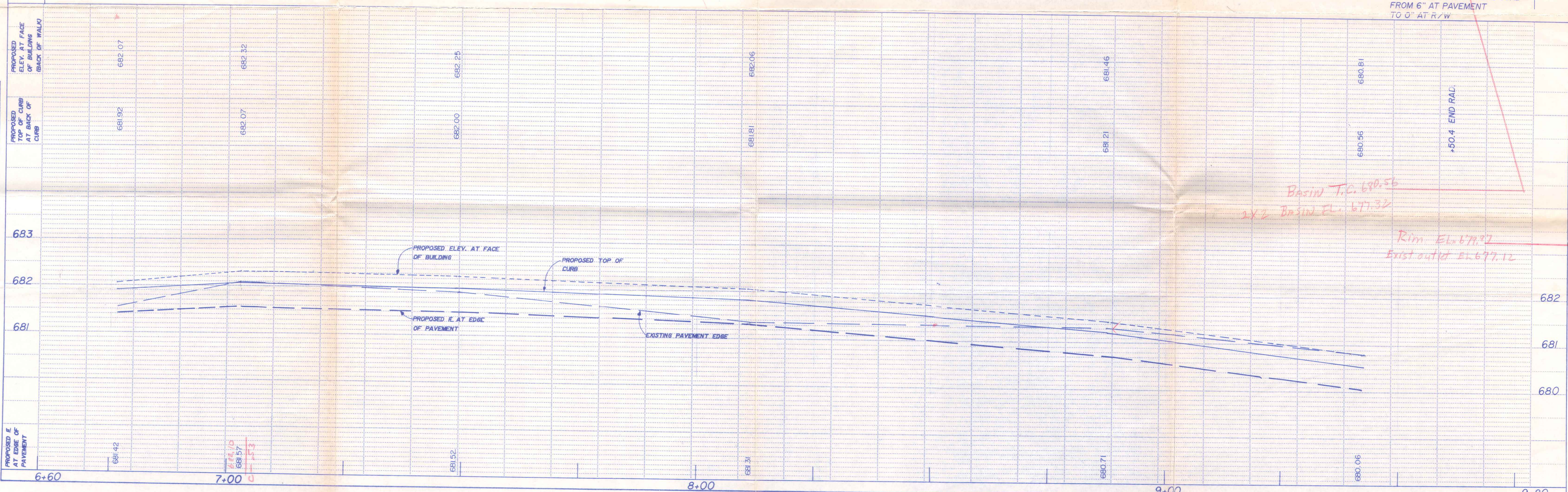
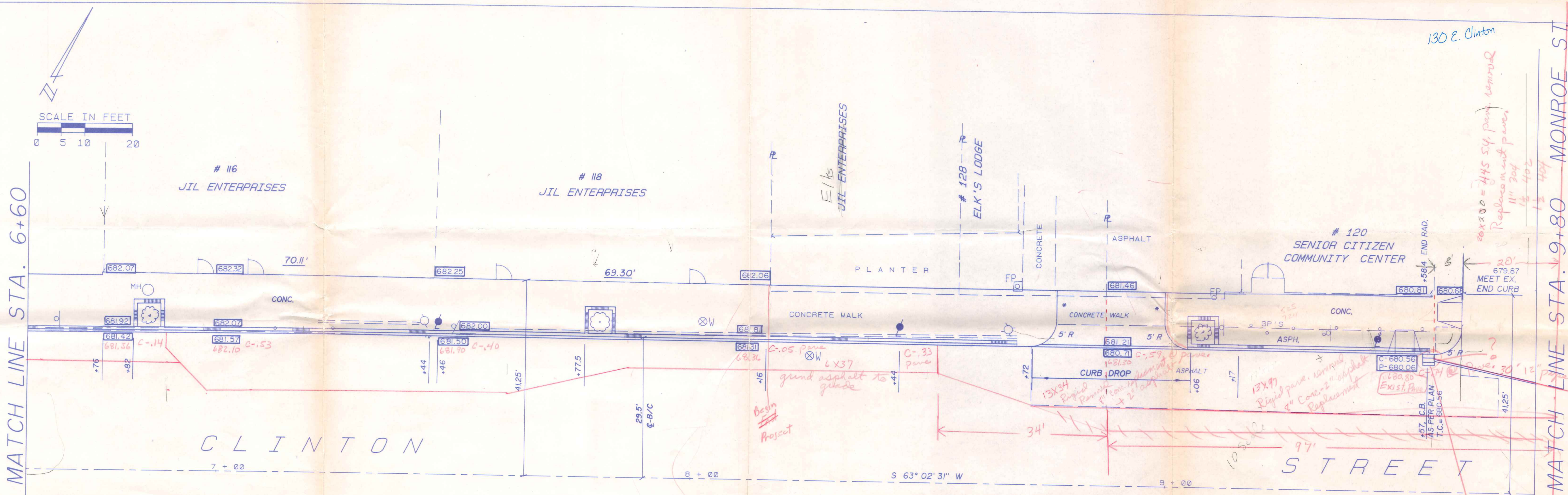
PLAN	SURVEYED	DATE
	PLOTTED	BY
	GRADES CHECKED	
	STRUCTURE LOCATIONS CHECKED	
	RT. OF WAY CHECKED	
	NO. OF WAY CHECKED	

PROFILE	SURVEYED	DATE
	PLOTTED	BY
	GRADES CHECKED	
	STRUCTURE LOCATIONS CHECKED	
	NO. OF WAY CHECKED	



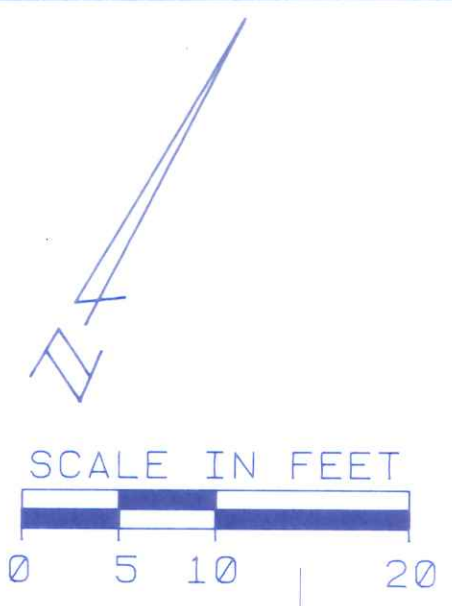
MATCH LINE STA. 6+60

MATCH LINE STA. 9+80 MONROE ST



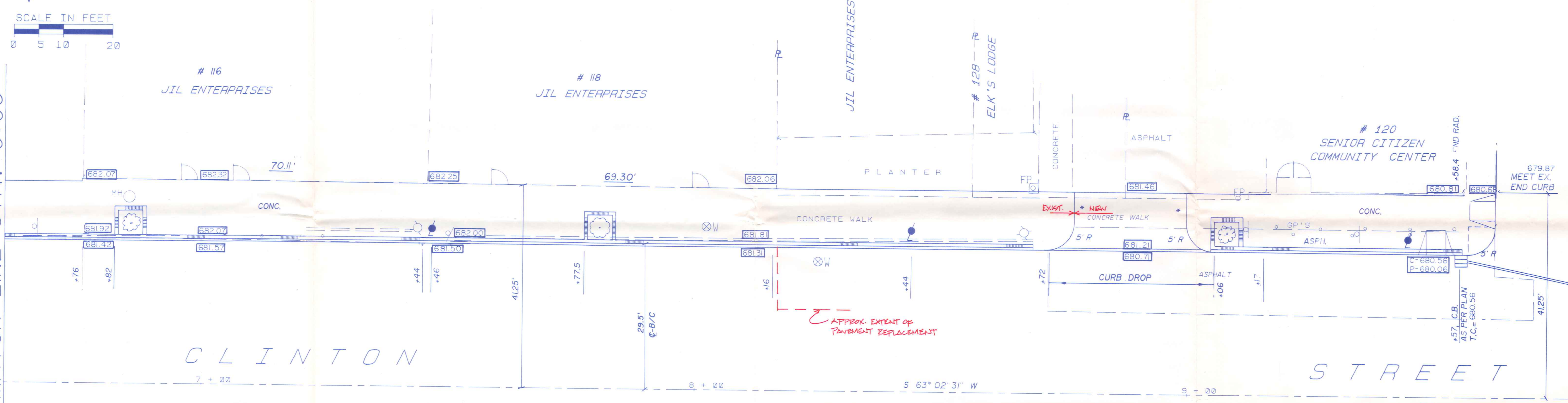
HIGHWAY FEDERAL AID SHEET
 PLATE 1-SINGLE PLAN AND PROFILE-FULL DOT
 HT/LE/MS
 PRINTED IN U.S.A.

CLINTON STREET STA. 6+60 TO STA. 9+80 LT. Sheet 15



PLAN	SURVISED	DATE
	PLOTTED	
	NOTED	
	BY	
	NO.	

MATCH LINE STA. 6+60



PROFILE	SURVISED	DATE
	GRADES CHECKED	
	B. M. NOTED	
	STRUCTURE NOTATIONS (H/W)	
	BY	
	NO.	

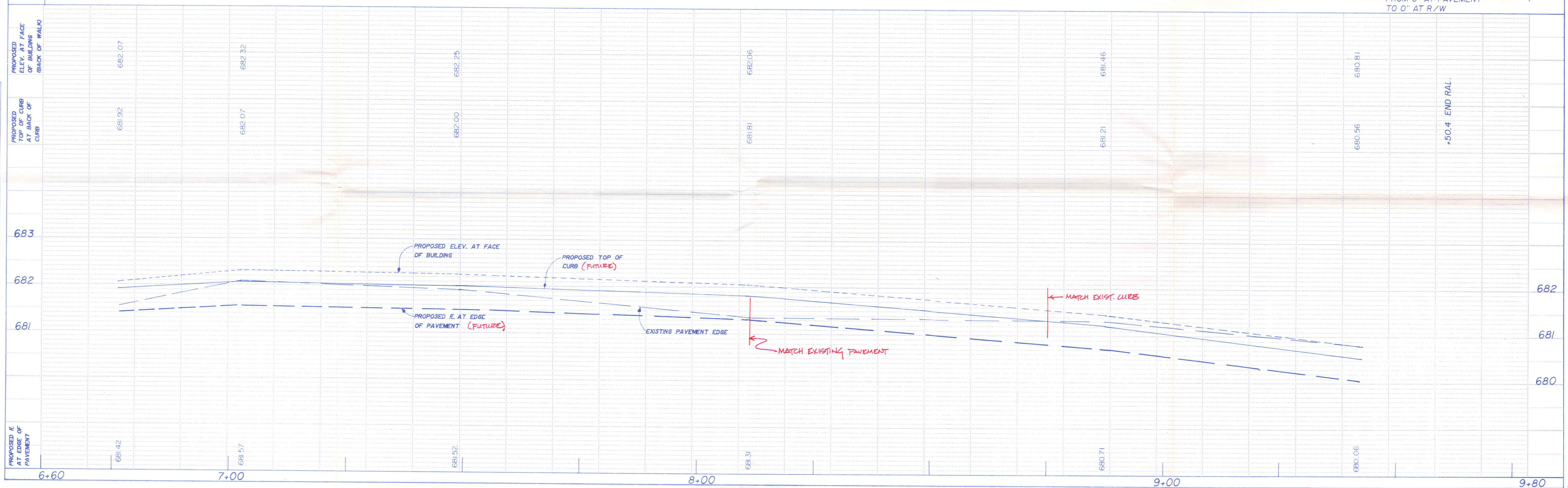
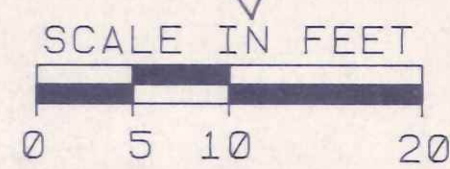


PLATE 1-SINGLE PLAN AND PROFILE-FULL DOT
PRINTED IN U.S.A.

MATCH LINE STA. 9+80 MONROE ST.

PLAN	SURVEYED	BY	DATE
	PLOTTED		
	CHECKED		
	RT. OF WAY CHECKED		
	NO. 1 BOOK		
	NO.		

PROFILE	SURVEYED	BY	DATE
	PLOTTED		
	CHECKED		
	NO. 1 BOOK		
	NO.		
	STRUCTURE NOTATIONS CHECKED		



CONSTRUCTION NOTES

SECTION A/CONCRETE & DRAINAGE WORK:

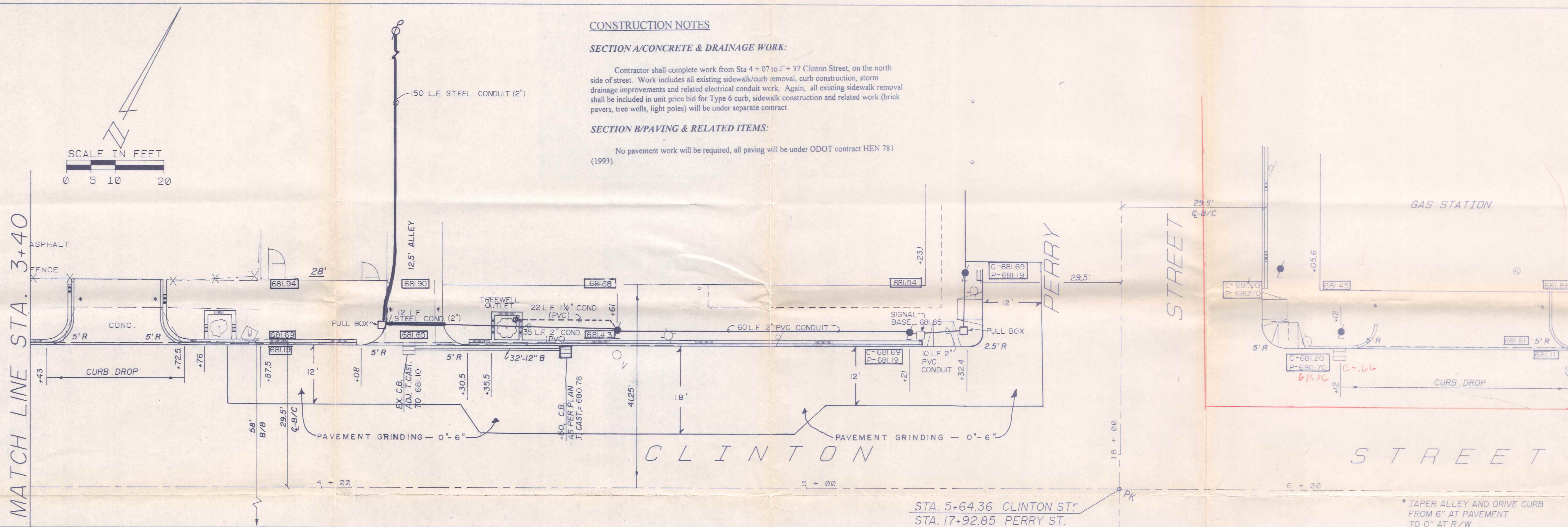
Contractor shall complete work from Sta 4+07 to 5+37 Clinton Street, on the north side of street. Work includes all existing sidewalk/curb removal, curb construction, storm drainage improvements and related electrical conduit work. Again, all existing sidewalk removal shall be included in unit price bid for Type 6 curb, sidewalk construction and related work (brick pavers, tree wells, light poles) will be under separate contract.

SECTION B/PAVING & RELATED ITEMS:

No pavement work will be required, all paving will be under ODOT contract HEN 781 (1993).

MATCH LINE STA. 3+40

MATCH LINE STA. 6+60



STA. 5+64.36 CLINTON ST.
STA. 17+92.85 PERRY ST.

* TAPER ALLEY AND DRIVE CURB FROM 6" AT PAVEMENT TO 0" AT R/W

